

**ITEM 33. PARKING – POLICE PARKING – RILEY AND CAMPBELL STREETS
SURRY HILLS**

TRIM RECORD NO: 2017/456805

RECOMMENDATION

It is recommended that the Committee endorse the following:

- (A) Reallocation of parking on the western side of Riley Street, Surry Hills between the points 70 metres and 89 metres (three car spaces) north of Campbell Street, as “No Parking, Police Vehicles Excepted”; and
- (B) Reallocation of parking on the northern side of Campbell Street, Surry Hills between the points 86 metres and 92 metres (one car space) west of Riley Street, as “No Parking, Council Vehicles Excepted”; and between the points 92 and 100.6 metres (one car space) west of Riley Street, as “No Parking, RMS Vehicles Excepted”.

VOTING MEMBERS FOR THIS ITEM

<i>Voting Members</i>	<i>Support</i>	<i>Object</i>
City of Sydney		
Roads and Maritime Services		
NSW Police – Surry Hills LAC		
Representative for the Member for Sydney		

DECISION

BACKGROUND

The NSW Police Service have requested consideration of additional police parking on Riley Street, adjacent to the Sydney Police Centre and Surry Hills Police Station, due to safety and security concerns.

The NSW Police Service have also requested consideration for parking changes on Campbell Street, adjacent to the existing access driveway of the Sydney Police Centre, due to safety and security concerns. The driveway is used by the NSW Police Force to access the rear car park of the Sydney Police Centre.

The NSW Police Force have raised concerns that cars parking adjacent to their access driveway compromises the safety and security of the Sydney Police Centre and their operational vehicles.

COMMENTS

The kerb space on the western side of Riley Street, Surry Hills between Campbell and Goulburn Streets, is currently a combination of “No Parking, Police Vehicles Excepted”, “No Parking, Council Vehicles Excepted” and “No Parking, RMS Vehicles Excepted”.

To enable the installation of additional police parking on the western side of Riley Street, the existing Council and RMS parking spaces, south of Goulburn Street, could be relocated to a new location on the northern side of Campbell Street, west of Riley Street.

The kerb space on the northern side of Campbell Street, where the parking changes are proposed, is currently “2P Ticket 8am-6pm, Mon–Fri” and “4P Ticket 6pm-10pm, Mon-Fri, 8am-10pm, Sat-Sun & Public Holidays”.

Relocating the Council and RMS parking spaces from Riley Street to Campbell Street will also address NSW Police concerns about security and safety adjacent to their access driveway on Campbell Street. This will result in the loss of two ticket parking spaces.

This change will allow for three additional “No Parking, Police Vehicles Excepted” spaces on the western side of Riley Street and group police parking in one location.

The proposed parking changes would limit parking to all vehicles other than authorised police vehicles where the signs are installed.

CONSULTATION

The City consulted local residents and businesses in the area. There were 1016 letters sent out with one response supporting the proposal and six responses opposing the proposal.

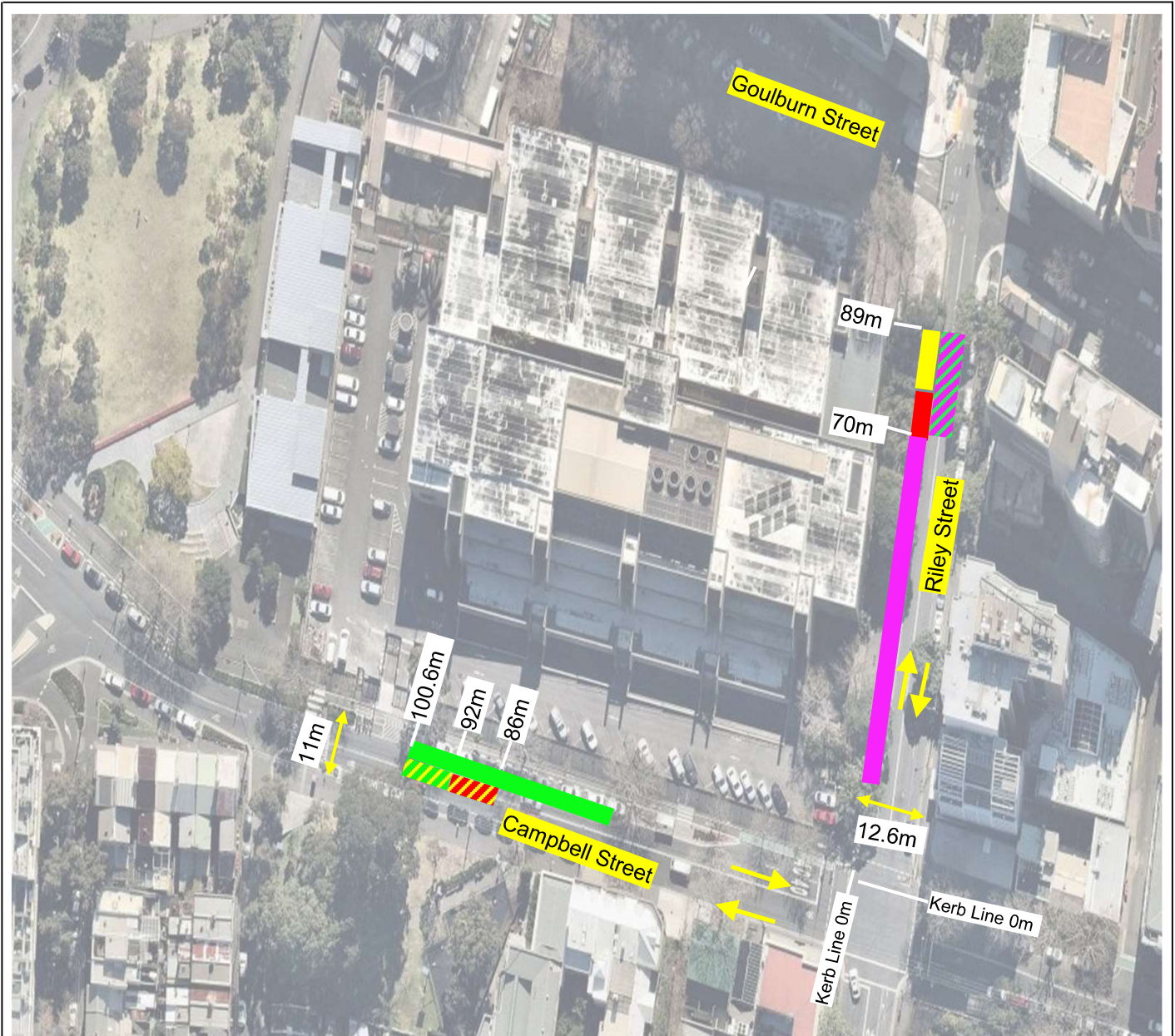
Submissions opposing the proposal noted that the loss of period parking would impact parking availability for commercial businesses, residents and visitors to the area. However given that the proposal will improve Police operations and results in the loss of only two ticket parking spaces in Campbell Street, the City recommends proceeding with the proposal.

FINANCIAL





Funds are available in the current budget.

Parking – Police Parking – Riley and Campbell Streets Surry Hills




James Nguyen, Engineering Traffic Officer



Existing

-  2P Ticket 8am-6pm Mon – Fri, 4P Ticket 6pm-10pm Mon-Fri, 8am-10pm Sat-Sun & Public Holidays
-  No Parking RMS Vehicles Excepted
-  No Parking Police Vehicles Excepted
-  No Parking Council Vehicles Excepted

Proposed

-  No Parking Council Vehicles Excepted
-  No Parking RMS Vehicles Excepted
-  No Parking Police Vehicles Excepted

PROPOSAL

PROPOSED PARKING CHANGES
RILEY AND CAMPBELL STREETS
SURRY HILLS

